

Ceramics of Italy

MURALES

LE MATERIE COLLECTION





GRES PORCELLANATO A IMPASTO COLORATO
 FULL BODY COLOURED PORCELAIN STONEWARE - GRÈS PORCELAINÉ A PÂTE COLORÉE
 DURCHGEFÄRBTES FEINSTEINZEUG - GRES PORCELANICO DE PASTA COLORADA
 КЕРАМОГРАНИТ ИЗ ЦВЕТНОЙ СМЕСИ



MURALES LE MATERIE

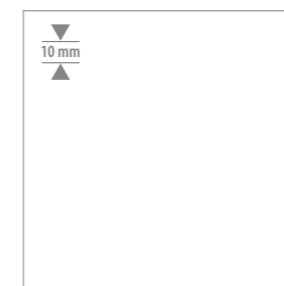
L'imperfezione è il segno distintivo di questa collezione, che riproducendo un effetto di vissuto ferma il tempo e si propone come rivestimento e pavimento in stile contemporaneo per ambienti unici e inconfondibili. Un cemento che trasmette emozioni e fa vivere gli spazi abitativi.

Disponibile in 4 colorazioni Beige, Ice, Grey e Dark, raggiunge la sua massima espressività nei formati 60x120, 80x80 e 40x80 tutti rettificati.

Ogni colore è corredato da un decoro damascato in 80x80.



60X120 rett
24"x48" rett



80X80 rett
31 1/2"x31 1/2" rect



40X80 rett/rect
15 3/4"x31 2/4"

Imperfection is the hallmark of this collection, which reproduces an effect of lived-in time and is proposed as a contemporary style floor and wall covering for rooms with an unmistakable style. A cement that transmits emotions and makes living spaces live. Available in 4 colors Beige, Ice, Gray and Dark reaches its maximum expressiveness in the sizes 60x120, 80x80 and 40x80 all rectified.

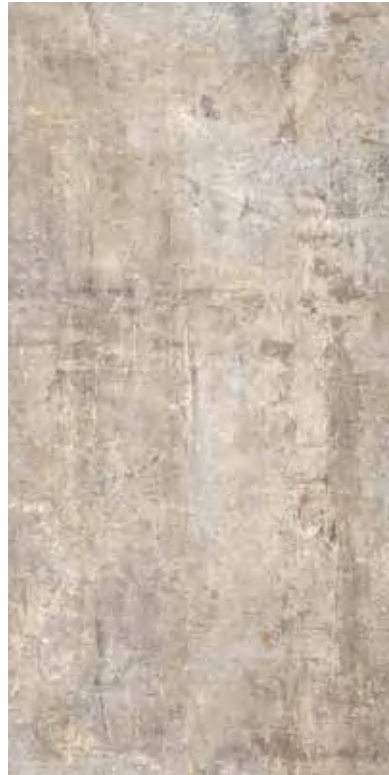
Each color is accompanied by a damask decoration in 80x80.

MURALES
ICE



MURALES
BEIGE

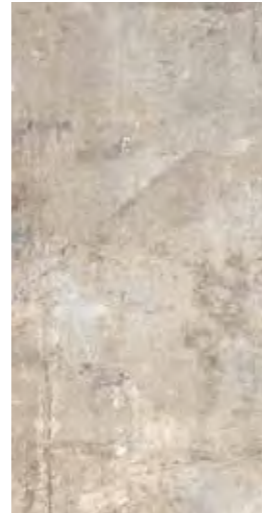
BEIGE



J87898
60x120 (24"x48") rett./rect.



J87995
80x80 (31 1/2"x31 1/2") rect.



J87999
40x80 (16"x31 1/2") rect.



J88194 Decoro Brass
60x120 (24"x48") rett./rect.



J88134 Decoro
80x80 (31 1/2"x31 1/2") rect.



J88320 Mosaico
30x30 (12"x12")



J88335 Bombay Beige
40x80 (16"x31 1/2") rect.

ICE



J87901
60x120 (24"x48") rett./rect.



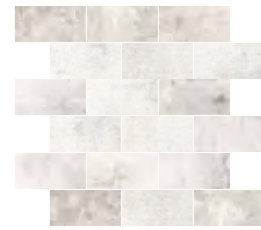
J87998
80x80 (31 1/2"x31 1/2") rect.



J88002
40x80 (16"x31 1/2") rect.



J88197 Decoro Brass
60x120 (24"x48") rett./rect.



J88323 Mosaico
30x30 (12"x12")



J88137 Decoro
80x80 (31 1/2"x31 1/2") rect.



J88336 Bombay Ice
40x80 (16"x31 1/2") rect.

GREY



J87900
60x120 (24"x48") rett./rect.



J87997
80x80 (31 1/2"x31 1/2") rect.



J88001
40x80 (16"x31 1/2") rect.



J88196 Decoro Brass
60x120 (24"x48") rett./rect.



J88136 Decoro
80x80 (31 1/2"x31 1/2") rect.



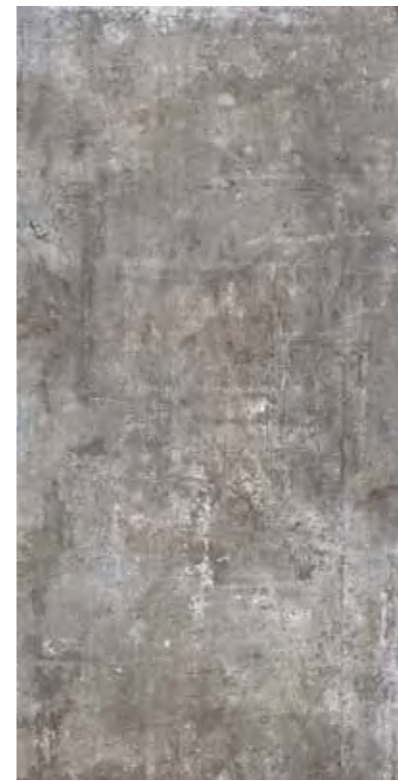
J88322 Mosaico
30x30 (12"x12")





MURALES
DARK

DARK



J87899
60x120 (24"x48") rett./rect.



J87996
80x80 (31 1/2"x31 1/2") rect.



J88000
40x80 (16"x31 1/2") rect.



J88195 Decoro Brass
60x120 (24"x48") rett./rect.



J88135 Decoro
80x80 (31 1/2"x31 1/2") rect.

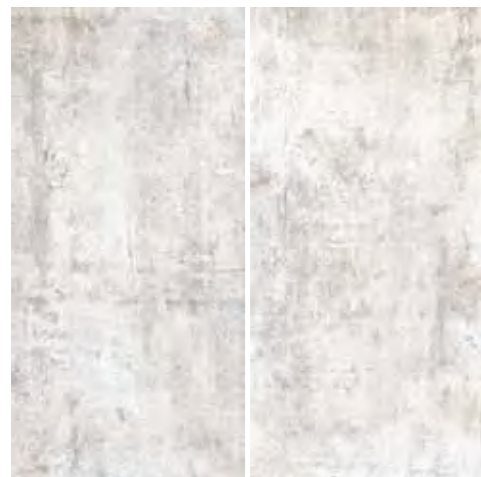


J88321 Mosaico
30x30 (12"x12")



MURALES **GREY**





17 60X120

14 80X80

28 40X80

GRAFICHE DIVERSE
DIFFERENT PATTERNS
DIFFÉRENTS MOTIFS
VERSCHIEDENE MUSTER
РАЗЛИЧНЫЕ УЗОРЫ



ICE

RETTIFICATI - RECTIFIED



Decoro
80x80 rett
(31 1/2"x31 1/2") rect

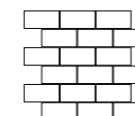
ICE	J87901	J87998	J88002	J88137
GREY	J87900	J87997	J88001	J88136
DARK	J87899	J87996	J88000	J88135
BEIGE	J87898	J87995	J87999	J88134

Contributo spese imballo € 10,00/pal (netto). - Packing charges € 10,00/pal (net)

SPESSORE THICKNESS	10 mm	10 mm	10 mm	10 mm
KG/M ²	20,70	21,10	22,25	21,10
PZ/BOX	2	2	3	2
M ² /BOX	1,44	1,28	0,96	1,28
BOX/PALLET	32	40	33	40
M ² /PALLET	46,08	51,20	31,68	51,20
KG/PALLET	954,24	1080,4	704,9	1080,4
€ < 1PALLET	65,00/m ²	65,00/m ²	60,00/m ²	76,40/m ²
€ ≥ 1PALLET	56,50/m ²	56,50/m ²	50,00/m ²	66,40/m ²



Brass



Mosaico



Bombay



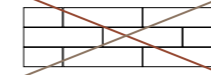
Battiscopa

ICE	J88197	J88323	J88336	J88268
GREY	J88196	J88322	-	J88267
DARK	J88195	J88321	-	J88266
BEIGE	J88194	J88320	J88335	J88265

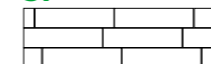
Contributo spese imballo € 10,00/pal (netto). - Packing charges € 10,00/pal (net)

PZ/BOX	2	6	2	12
€ /U.M.	179,00 pz./p.ce	122,20/m ²	86,50 pz./p.ce	9,30 pz./p.ce

NO 50%



SI











Per i formati rettangolari, si consiglia una sfalsatura tra ciascuna piastrella non superiore a 6-10 cm
Fuga consigliata: minimo 3 mm. per prodotti non rettificati; minimo 2 mm. per prodotti rettificati
 When laying, you are recommended not to stagger the rectangular tiles by more than 6-10 cm (2"-4")
Suggested joint: 3 mm minimum for non-rectified products; 2 mm minimum for rectified products.
 Pose conseillée avec un décalage entre chaque listel non supérieur à environ 6-10 cm
Joint conseillé: 3 mm minimum pour produits non rectifiés; 2 mm minimum pour produits rectifiés.
 Wir empfehlen eine Verlegung mit einer Verschiebung zwischen den einzelnen Leisten von nicht mehr als ungefähr 6-10 cm
Empfohlene Fuge: mindestens 3 mm für nicht rechtwinklig geschliffene Produkte; mindestens 2 mm für rechtwinklig geschliffene Produkte.
 Рекомендуется укладка с разномом элементов друг относительно друга, не превышающим прилб 6-10 см
Рекомендуемый шов : минимум 3 мм для неректифицированных материалов и минимум 2 мм для ректифицированных

- WATER PROOF** 0.1%
- GA - GHA - GLA**
- OK**
- > 35 N/MM²**
- 7**
- 5**
- CLASSE IV (DARK GREY)**
- CLASSE V**
- R10**
SCOF (ASTM) : DRY 0.70 - WET 0.72
DCOF: WET 0.64
PENDULUM: DRY 44 - WET 34

V4 PIASTRELLA CON NOTEVOLE VARIAZIONE DI TONO E GRAFICA

Tiles with random shade and aspect variation
 Carreaux avec différence aléatoire de nuance et structure
 Fliesen mit zufällig unterschiedlichen Tonalitäten und Muster
 Плитка с произвольным изменением оттенка и рисунка

CARATTERISTICHE TECNICHE_TECHNICAL FEATUURES_CARACTÉRISTIQUES TÉCNIQUES
TECHNISCHE EIGENSCHAFTEN_CARACTERÍSTICAS TÉCNICAS_ТЕХНИЧЕСКИЕ ХАРАКТЕРИСТИКИ

CARATTERISTICA TECNICA PHYSICAL PROPERTY CARACTERISTIQUE TECHNIQUE TECHNISCHE DATEN CARACTERÍSTICA TÉCNICA ТЕХНИЧЕСКАЯ ХАРАКТЕРИСТИКА	NUMERO O METODO DI MISURA NORMS/NORM/ NORME/NORMAS/ НОРМЫ	VALORE PRESCRITTO DELLA NORMA REQUIRED STANDARDS VALEUR PRESCRIPTE PAR LES NORMES VALORES REQUERIDOS NORMVORGABE ЗНАЧЕНИЕ, ПРЕДПИСАННОЕ НОРМОЙ
 <p>Resistenza chimica Chemical strength Resistance chimique Chemische beständigkeit Resistencia al ataque químico химическая стойкость</p>	<p>UNI EN ISO 10545-13</p>	<p>Resistenza a basse concentrazioni di acidi/alkali Resistenza ad alte concentrazioni di acidi/alkali Resistenza ai prodotti chimici di uso domestico e agli additivi per piscina Resistance to low concentrations of alkalis and acids Resistance to high concentrations of alkalis and acids Resistance to household chemical products and swimming pool additives Résistance à de faibles concentrations d'acides et d'alkalis Résistance à de fortes concentrations d'acides et d'alkalis Résistance aux produits chimiques à usage domestique et aux additifs pour piscine Alkali- u. Säurebeständigkeit für niedrige Konzentrationen Alkali- u. Säurebeständigkeit für hohe Konzentrationen Beständigkeit gegen chemische Haushaltsprodukte und Zusatzstoffe für Schwimmbäder Устойчивость к воздействию кислот и щелочей низкой концентрации Устойчивость к воздействию кислот и щелочей высокой концентрации Устойчивость к воздействию бытовых химикатов и добавок для бассейнов</p>
 <p>Assorbimento d'acqua Water Absorption Absorption d'eau Wasseraufnahme Absorción de agua Водопоглощение</p>	<p>UNI EN ISO 10545-3</p>	<p>≤ 0,5%</p>
 <p>Resistenza alla flessione Bending Strength Résistance à la flexion Biegefestigkeit Resistencia a la flexión Предел прочности при изгибе</p>	<p>UNI EN ISO 10545-4</p>	<p>N ≥ 27N / mm²</p>
 <p>Resistenza al gelo Frost resistance Résistance au gel Frostwiderstandsfähigkeit Resistencia a la helada Морозостойкость</p>	<p>UNI EN ISO 10545-12</p>	<p>Nessun campione deve presentare rotture o alterazioni apprezzabili della superficie. No sample must show alterations to the surface Les échantillons ne doivent pas présenter de ruptures ou d'altérations considérables de la surface. Die Muster dürfen weder Bruch noch Schäden an der Oberfläche aufweisen. Ninguna muestra debe presentar roturas o alteraciones apreciables de la superficie Ни один из образцов не должен иметь трещин или других заметных изменений поверхности</p>
 <p>Resistenza alle macchie Stain resistant Resistance aux taches Gegen flecken beständig Resistencia a las manchas Стойкость к пятнам</p>	<p>UNI EN ISO 10545-14</p>	<p>Classe ≥ 3 Class ≥ 3 Classe ≥ 3 Klasse ≥ 3 Clase ≥ 3 Класс ≥ 3</p>
 <p>Durezza di Mohs Hardness in Mohs degrees Dureté de Mohs Moh'sche Härte Dureza de Mohs Твердость по Моосу</p>	<p>UNI EN 101</p>	<p>≥ 5° Mohs</p>
 <p>Resistenza allo scivolamento (coefficiente di attrito) Slip resistance (coefficient of friction) Résistance au glissement (coefficient de friction) Rutschfestigkeit (Reibungskoeffizient) Resistencia al deslizamiento (coefficiente de roce) Сопротивление скольжению (коэффициент трения)</p>	<p>DIN 51130 ASTM-C 1028</p>	<p>Attrito soddisfacente Satisfactory friction Friction satisfaisante Befriedigende Reibung Roce satisfactorio Удовлетворительный коэффициент трения</p>
 <p>Resistenza all'abrasione Abrasion resistance Resistance a la abrasion Abriebfestigkeit Resistencia a la abrasión УСТОЙЧИВОСТЬ К ИСТИРАНИЮ</p>	<p>Classificazione Interna Internal Classification System</p>	<p>Piastrelle smaltate - Classi di abrasione da I a V Glazed tiles - Abrasion class from I to V Cx émaillés - Classe d'abrasion de I à V Glasierte Fliesen - Abriebklassen I bis V Azulejos esmaltados - Clase de la abrasión desde I a V глазуванная плитка - класс истирания от I до V</p>

Le caratteristiche tecniche indicate nei cataloghi di linea e nel Catalogo Generale, e in qualsiasi documento di promozione commerciale di Rondine s.p.a., hanno lo scopo di dare un'indicazione dei valori riscontrati nei vari lotti e nelle varie tonalità del prodotto, pertanto differenze rispetto a tali valori indicativi non possono essere oggetto di contestazione.
All technical features stated in leaflets, in master brochure and in merchandising of Rondine Spa are meant to be an indication of an average of figures recorded within a span (determined by international law) in several production runs, therefore a slight discrepancy in quality figures of a certain batch in relation to these figures cannot be considered a production failure.
Les caractéristiques techniques mentionnées dans les catalogues de ligne et dans le catalogue général et dans tous les documents de promotion commerciale de Rondine SpA ont le but de fournir une indication des valeurs rencontrées dans les différents lots et dans les différentes tonalités du produit et donc les différences par rapport à ces valeurs indicatives ne peuvent pas faire l'objet des réclamations.

UNI EN ISO 14001:2015
UNI CEI EN ISO 50001:2011



SISTEMI DI GESTIONE
CERTIFICATI



Rondine s.p.a. - Via Emilia Ovest 53/A 42048 Rubiera (RE) - Italy
+39 0522 625111 - www.ceramicarondine.it

