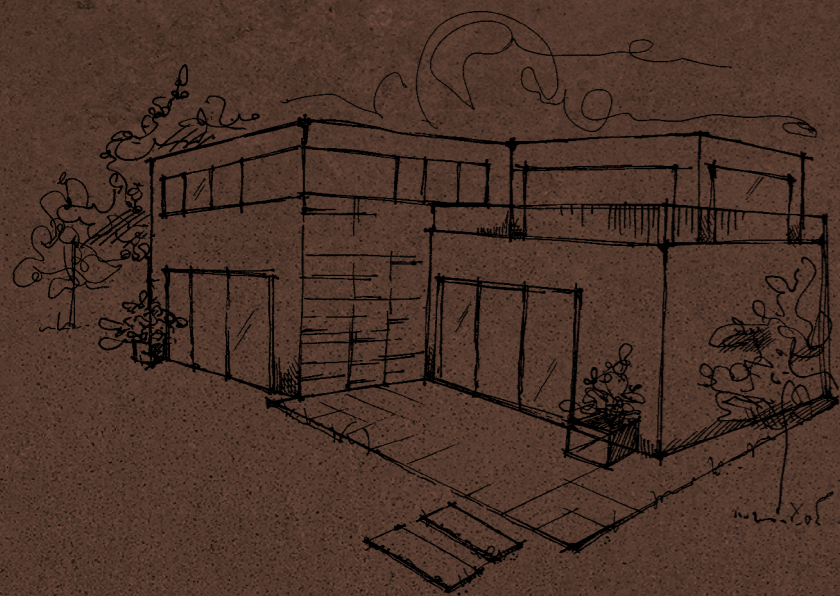
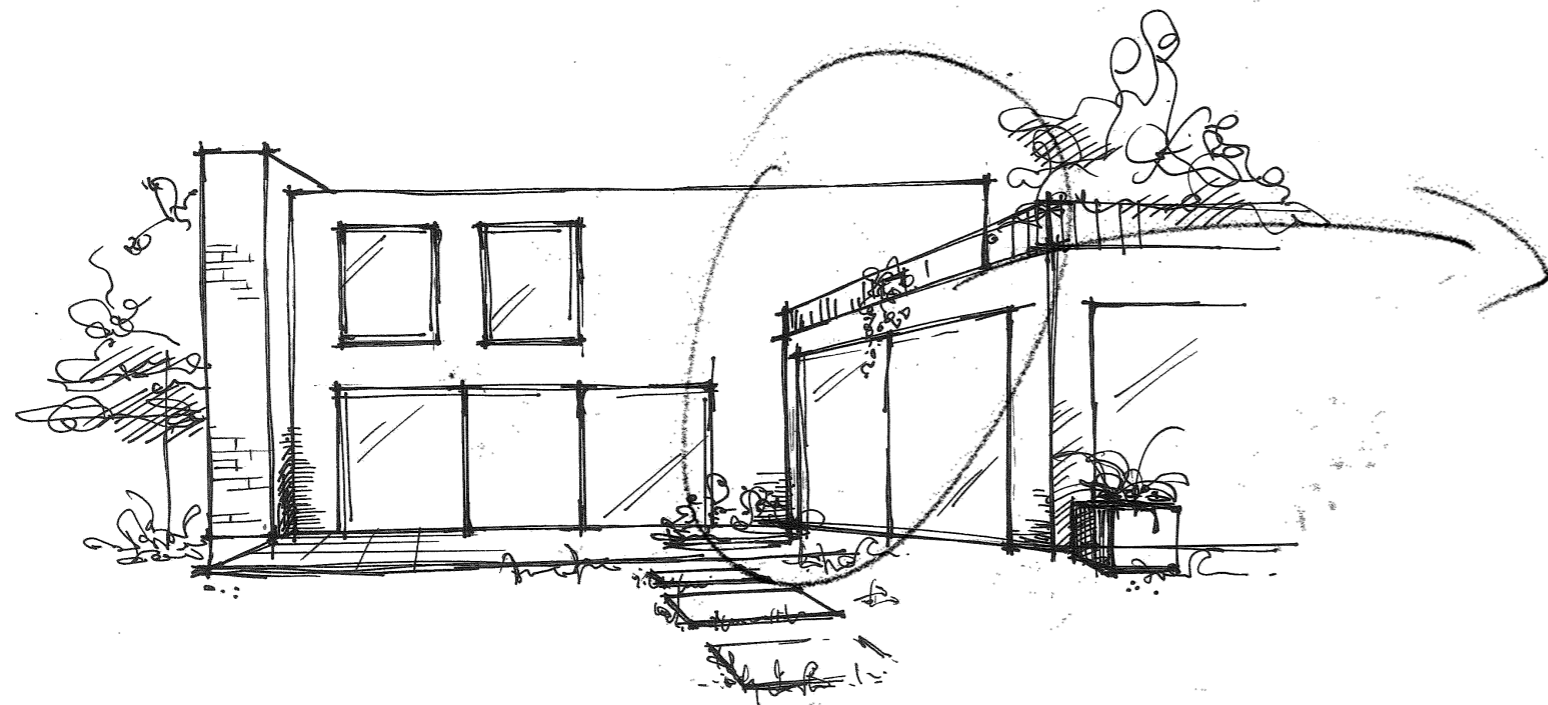


INTERNO

9



INTERNO 9



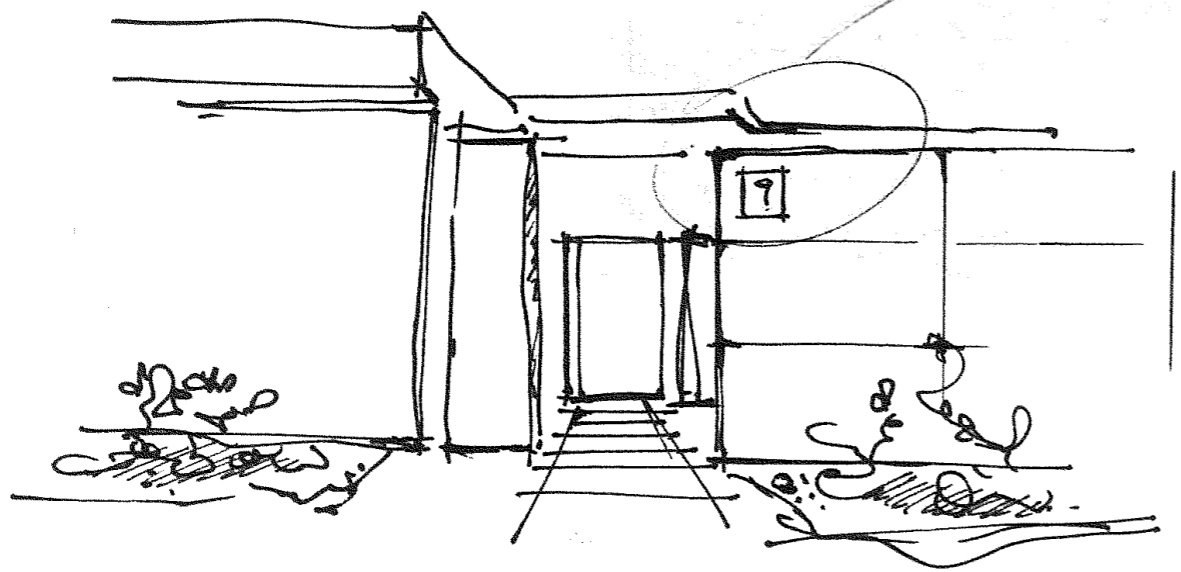
INTERNO 9

Immagina un complesso residenziale con uno stile moderno, minimalista, dove lo sguardo incontra strutture lineari, armonie di volumi, contrasti materici. L'eleganza della semplicità si amalgama all'irriverenza indomita del metallo che, con affascinante rudezza, si fa protagonista del paesaggio.

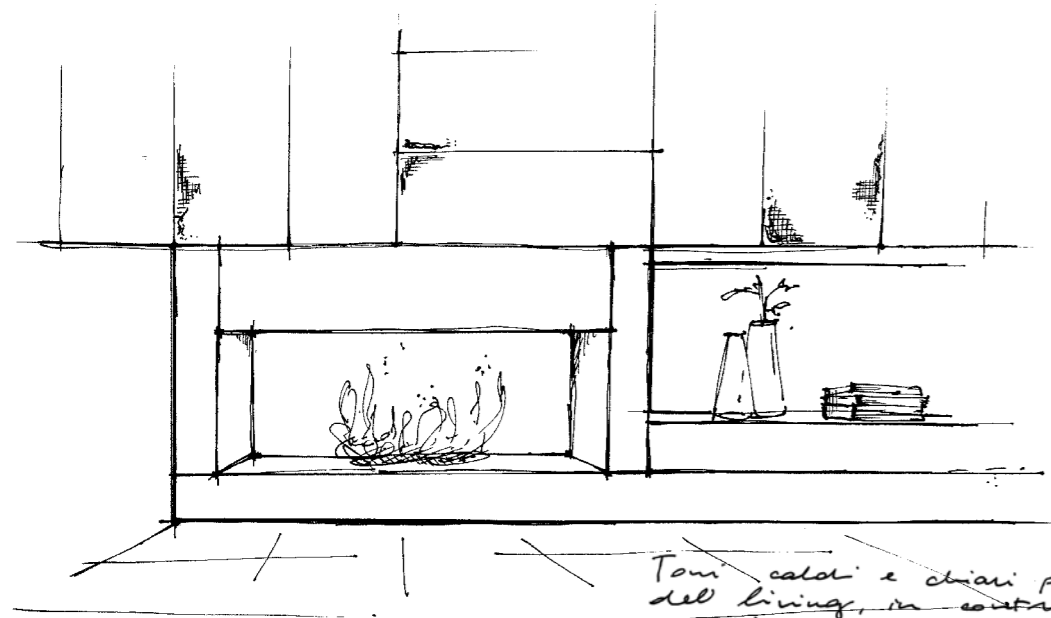
Imagine a contemporary residential complex with a minimalist feel, where the viewer's gaze is drawn to linear structures, harmonious forms, and contrasting textures. Stylish simplicity is paired with the untamed irreverence of weathering steel, which - with a stunning coarseness - becomes a key feature of the landscape.

Esterno Complesso residenziale:
lastre effetto corten in
parete, porta pulita
Targhetta dei numeri interni
da realizzare a rilievo in ferro
scelta verde sempreverdi
con forme pulite

Exterior, residential complex:
weathering steel effect slabs
on walls, minimalist feel
Plates showing apartment numbers
to be made in iron with
embossed design.
Greenery: evergreens with clean lines







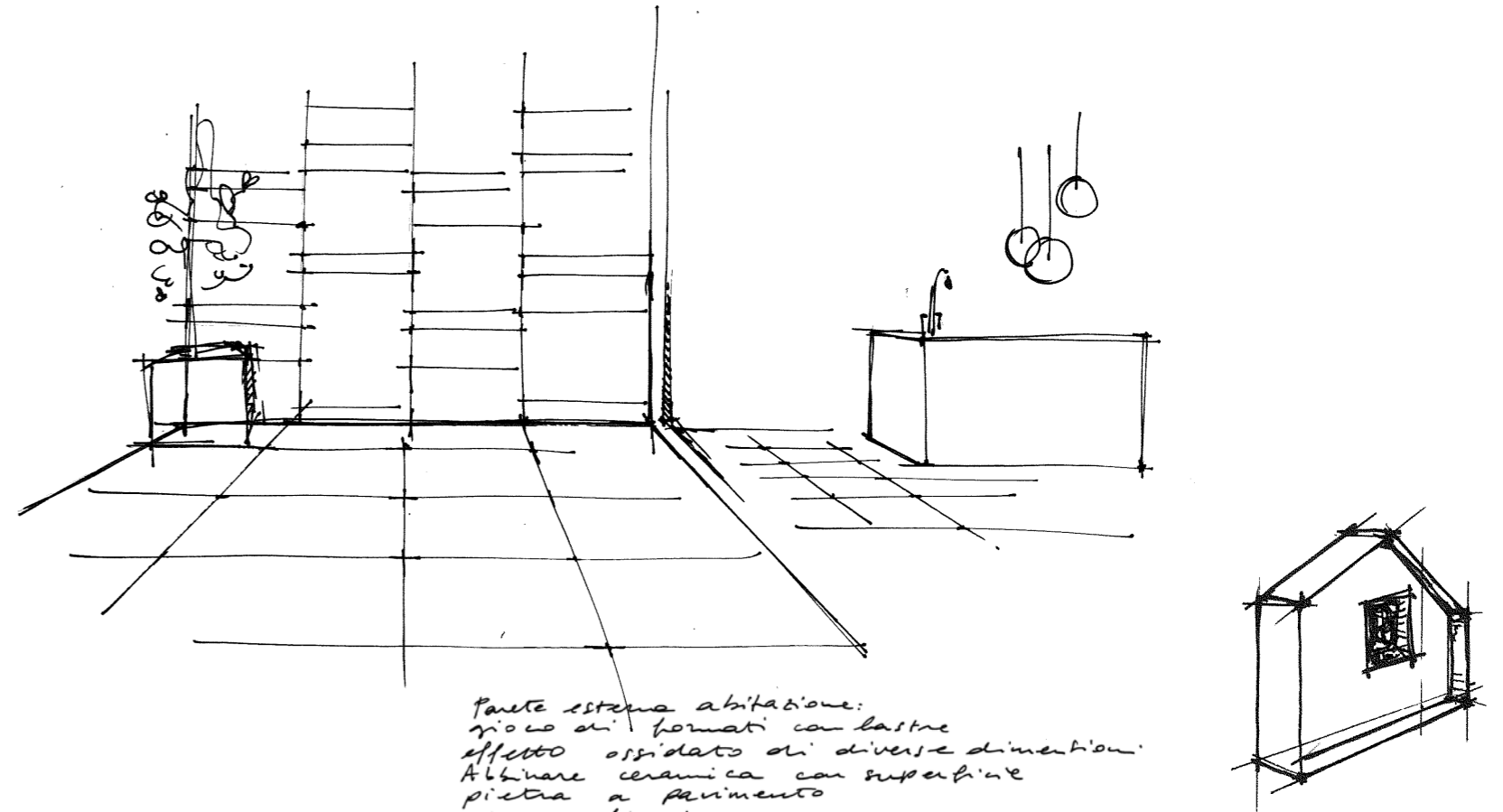
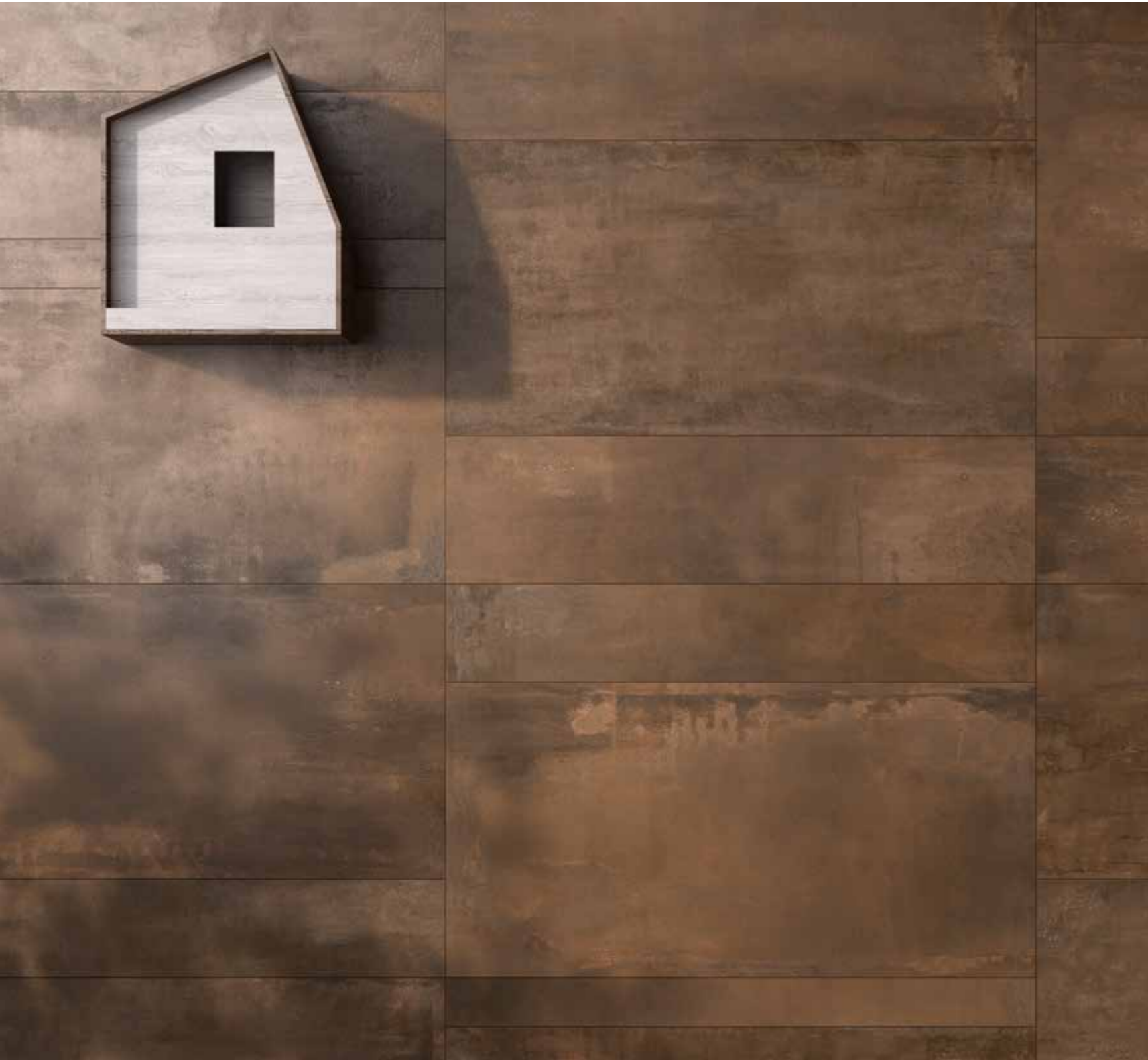
Toni caldi e chiari per il pavimento
del living, in contrasto con gli
arredi scuri e la struttura camino
Prevedere base in marmo per
il camino

Warm, pale tones for the living room floor
provide a stylish contrast with the dark
furnishing and the fireplace feature
Include marble hearth





Outdoor: Rust 60x120 - Rust Mix Sizes 60x120 - Unika Grey Bocc. 60x60
Indoor: Mosaico Losanga Rust 30x60 - Rust Lapp. 60x120 / 60x60



parete esterna abitazione:
gioco di formati con lastre
effetto ossidato di diverse dimensioni.
Abbinare ceramica con superficie
pietra a pavimento
Pianta fiorita in vaso

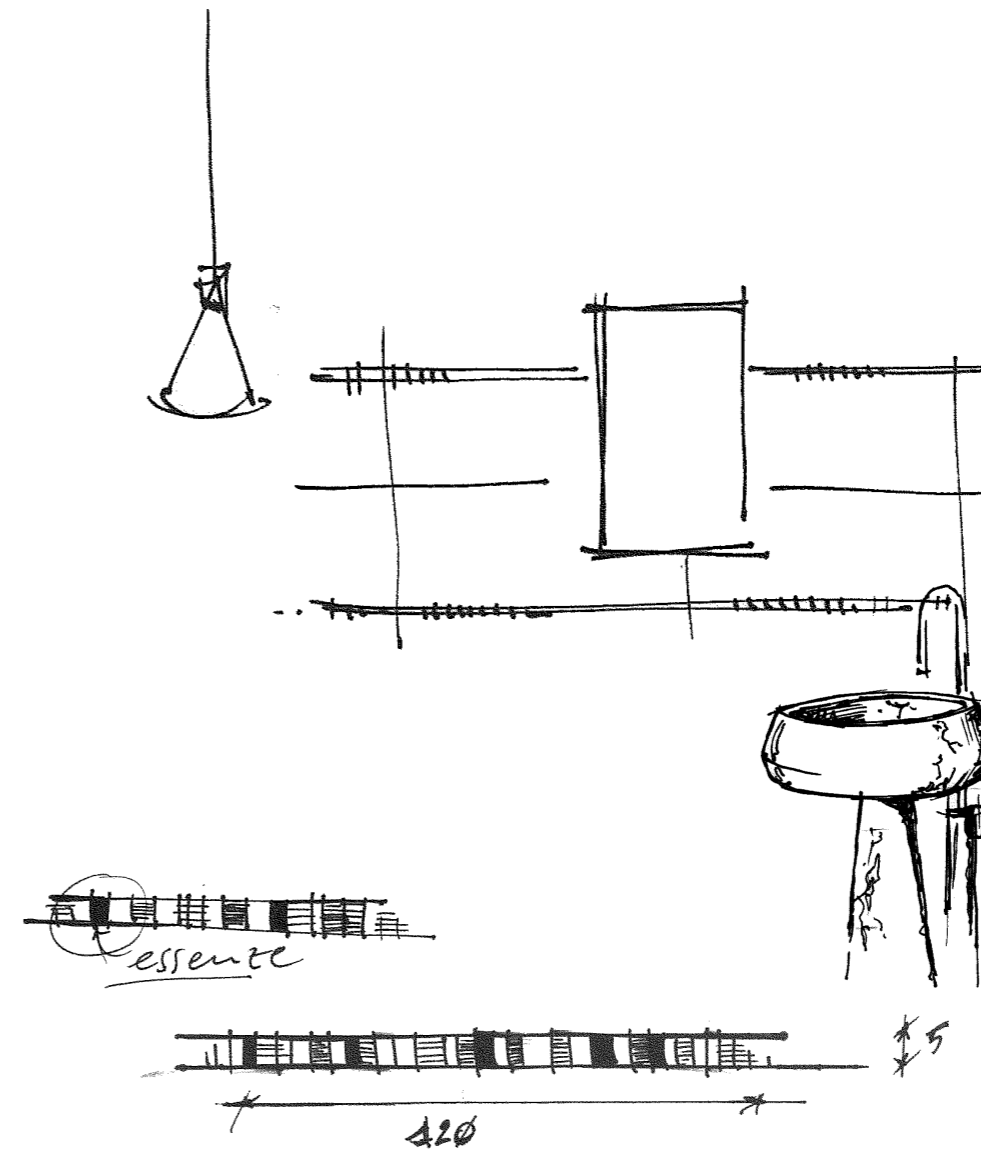
External walls, home: design featuring
a combination of different-sized
rust-effect slabs
Team ceramic slabs with stone paving
Flowering plant in pot





1

Pearl 30x120 / 60x120 - Dolphin Grey 20x120 - Fascia Essenze 5x30 - Silver 60x60



Mixare legno a materiali ceramici chiari
Abbinare sanitari con linee morbide
in marmo scuro
Miscelatori in ottone

Team wood with pale ceramic tiling
Combine with dark marble bathroom
furnishings with soft lines
Brass mixer taps



Pearl 60x120

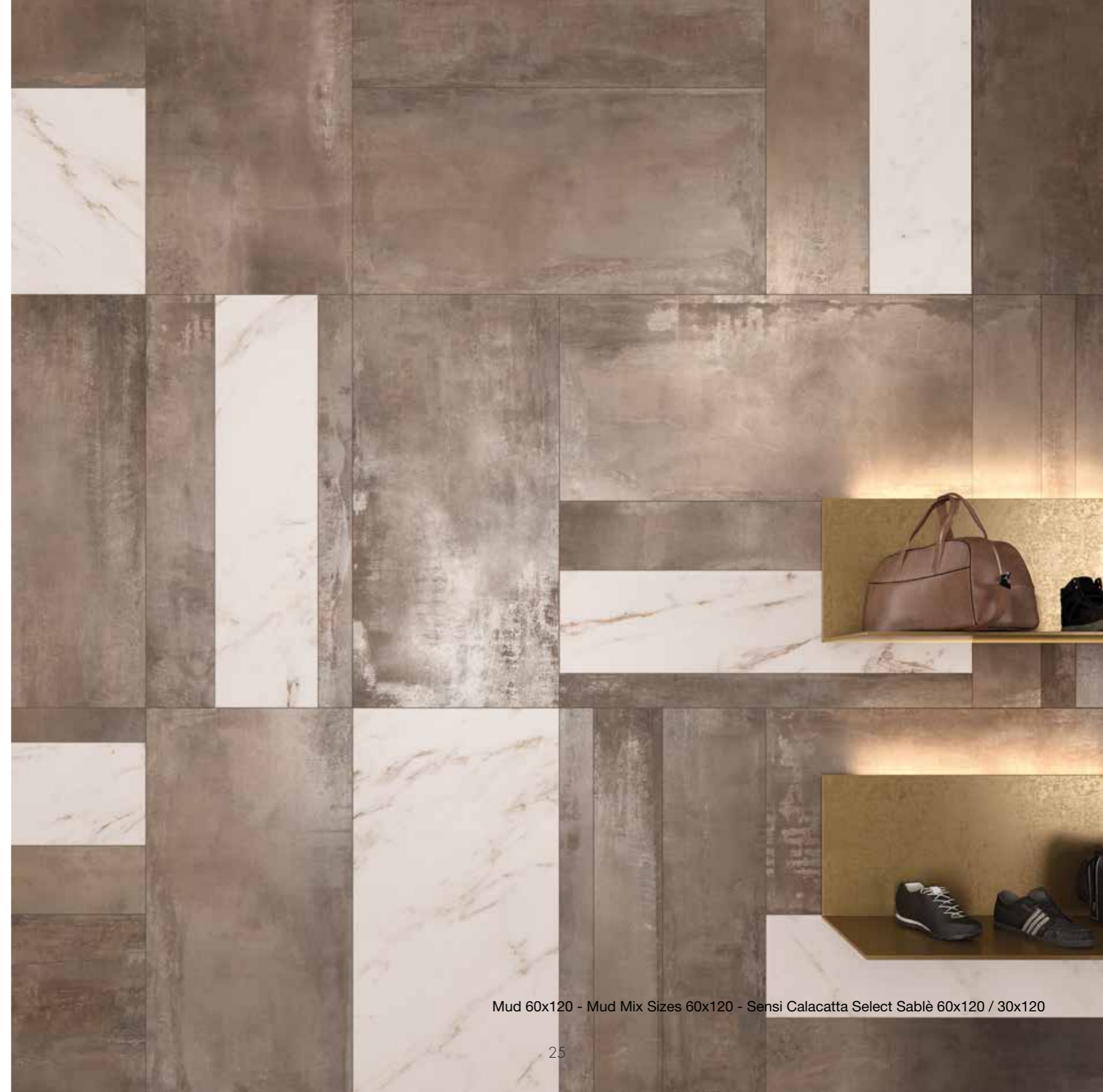
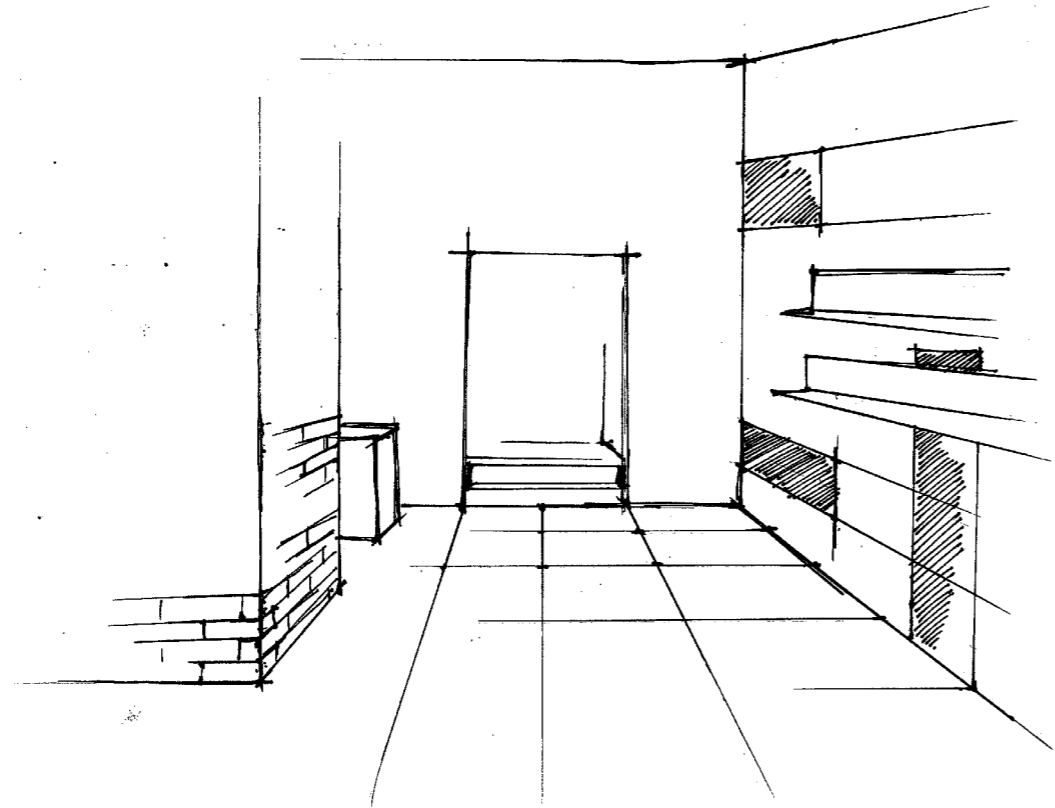
Silver 60x60





Per showroom, al 1° piano utilizzare lastre
effetto cotto nero a pavimento e parete
muretto 3D
Parete espositiva: posa multiformato
d'effetto con stesse lastre in colorazioni più calde
Posa marmo ceramico nella parte scale
e nella parete espositiva
Mensole ad L in metallo color ottone
retroilluminate

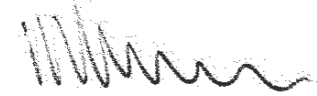
For the showroom, on the first floor,
use black weathering steel-effect slabs on the floor
and 3D dwarf wall effect on the walls
Display wall: high-impact multi-size
design with the same slabs in warmer tones
Fit ceramic marble tiles on the walls of the
stairway and on the display wall
Brass-coloured metal L-shaped shelves
with backlighting





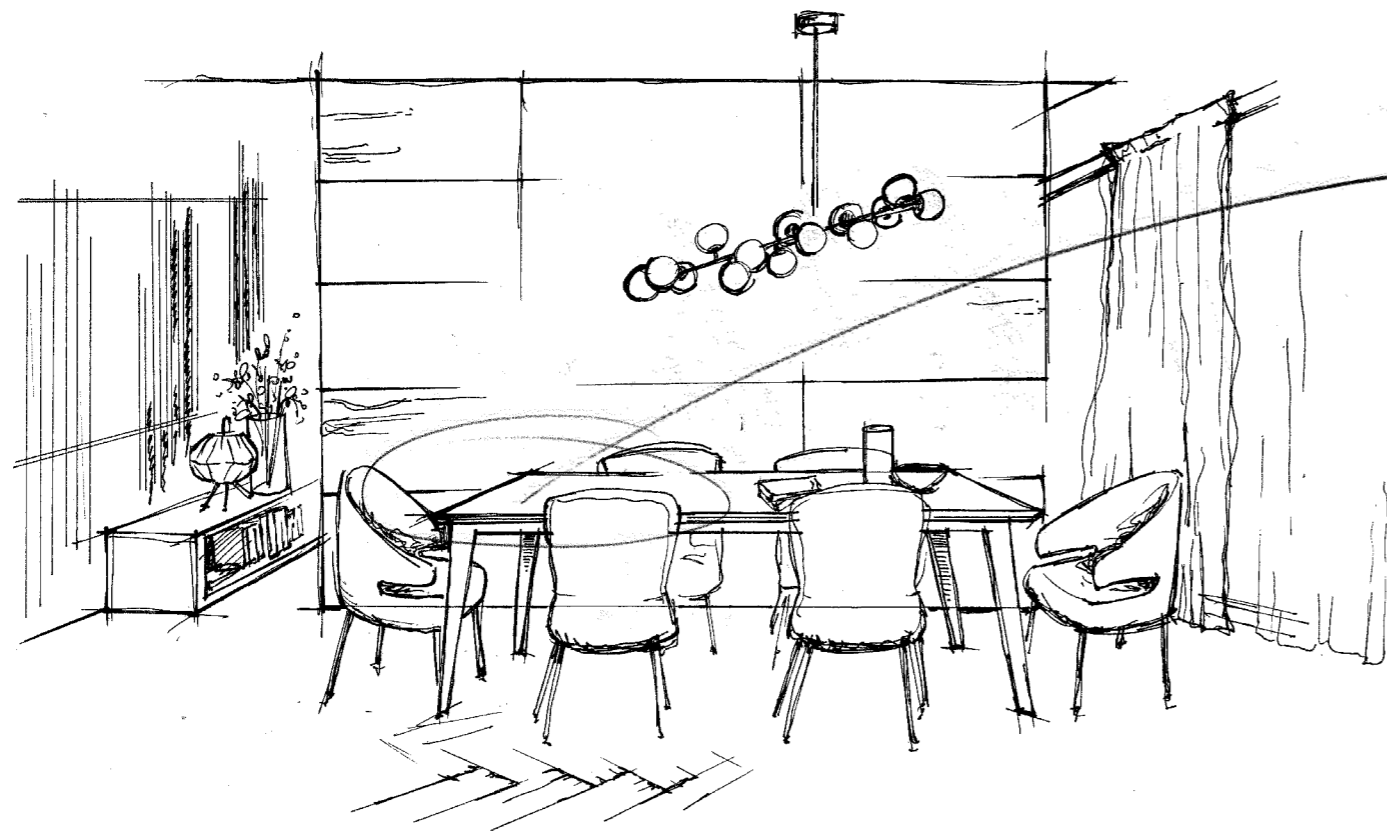






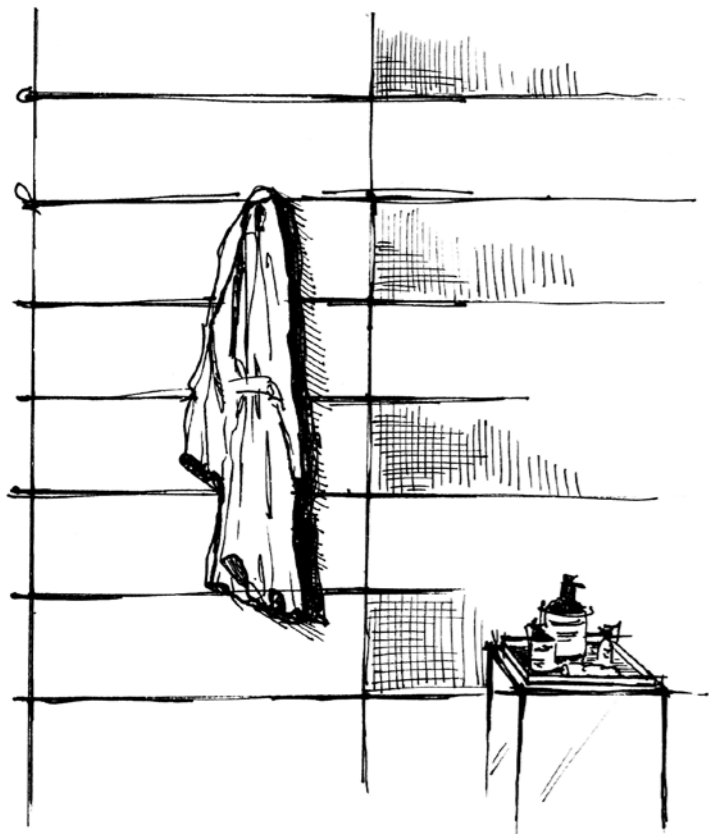
Gusto elegante; pavimento perlato posato a
stria di pesce + parete d'impatto con lastre effetto marmo
(cercare grafica importante)
Tocco di colore nelle sedute

Stylish elegance; pearl-effect floor slabs laid
in herringbone design + high-impact wall
with marble effect slabs
(find graphics with high visual impact)
A hint of colour in the seating





Indoor: Pearl 30x120 - Sensi Arabesque Silver Lux+ 60x120
Outdoor: Dolphin Grey Aged 20x120



Bagno ospiti: inserire in parete listoni ceramici
effetto metallo - tonalità di grigio
cercare decorazione con materie
metallizzate preziose

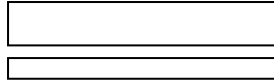
Guest bath room: add metal-effect ceramic
strip tiles in shades of grey to wall
Find decorations made of materials with
a precious metal finish



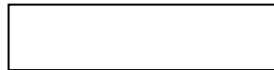




60x120 2
 INTERNO 9 PEARL
19R34050 rett. F 68,90
19L34050 lapp rett. F 81,90



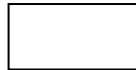
60x120 2
 INTERNO 9 PEARL
19R34060 mix sizes rett. F 88,90
 Pcs/box: 30x120 2
 20x120 2
 10x120 2



30x120 4
 INTERNO 9 PEARL
19R57050 rett. F 68,90
19L57050 lapp. rett. F 81,90



60x60 3
 INTERNO 9 PEARL
19R01050 rett. F 53,90
19L01050 lapp. rett. F ????



30x60 6
 INTERNO 9 PEARL
19R03050 rett. F 49,90



30x60 4
 MOS. LOSANGA PEARL
19R03051 rett. F ????



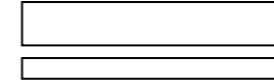
30x30 6
 MOS. QUADRETTI PEARL
19R09051 rett. F 101,90

INTERNO 9

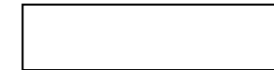
PEARL



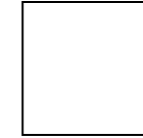
60x120 2
 INTERNO 9 DUNE
19R34100 rett. F 68,90
19L34100 lapp rett. F 81,90



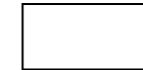
60x120 2
 INTERNO 9 DUNE
19R34110 mix sizes rett. F 88,90
 Pcs/box: 30x120 2
 20x120 2
 10x120 2



30x120 4
 INTERNO 9 DUNE
19R57100 rett. F 68,90
19L57100 lapp. rett. F 81,90



60x60 3
 INTERNO 9 DUNE
19R01100 rett. F 53,90
19L01100 lapp. rett. F ????



30x60 6
 INTERNO 9 DUNE
19R03100 rett. F 49,90



30x60 4
 MOS. LOSANGA DUNE
19R03101 rett. F ????



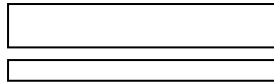
30x30 6
 MOS. QUADRETTI DUNE
19R09101 rett. F 101,90

INTERNO 9

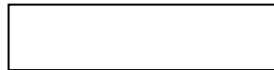
DUNE



60x120 2
 INTERNO 9 SILVER
I9R34150 rett. F 68,90
I9L34150 lapp rett. F 81,90



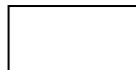
60x120 2
 INTERNO 9 SILVER
I9R34160 mix sizes rett. F 88,90
 Pcs/box: 30x120 2
 20x120 2
 10x120 2



30x120 4
 INTERNO 9 SILVER
I9R57150 rett. F 68,90
I9L57150 lapp. rett. F 81,90



60x60 3
 INTERNO 9 SILVER
I9R01150 rett. F 53,90
I9L01150 lapp. rett. F ????



30x60 6
 INTERNO 9 SILVER
I9R03150 rett. F 49,90



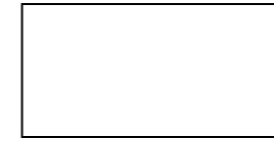
30x60 4
 MOS. LOSANGA SILVER
I9R03151 rett. F ????



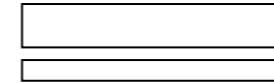
30x30 6
 MOS. QUADRETTI SILVER
I9R09151 rett. F 101,90

INTERNO 9

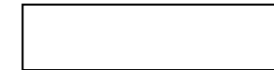
SILVER



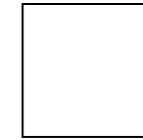
60x120 2
 INTERNO 9 DARK
I9R34200 rett. F 68,90
I9L34200 lapp rett. F 81,90



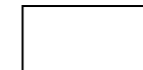
60x120 2
 INTERNO 9 DARK
I9R34210 mix sizes rett. F 88,90
 Pcs/box: 30x120 2
 20x120 2
 10x120 2



30x120 4
 INTERNO 9 DARK
I9R57200 rett. F 68,90
I9L57200 lapp. rett. F 81,90



60x60 3
 INTERNO 9 DARK
I9R01200 rett. F 53,90
I9L01200 lapp. rett. F ????



30x60 6
 INTERNO 9 DARK
I9R03200 rett. F 49,90



30x60 4
 MOS. LOSANGA DARK
I9R03201 rett. F ????



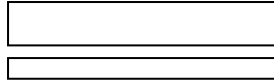
30x30 6
 MOS. QUADRETTI DARK
I9R09201 rett. F 101,90

INTERNO 9

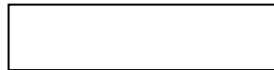
DARK



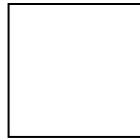
60x120 ☞ 2
 INTERNO 9 MUD
19R34250 rett. F 68,90
19L34250 lapp rett. F 81,90



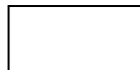
60x120 ☞ 2
 INTERNO 9 MUD
19R34260 mix sizes rett. F 88,90
 Pcs/box: 30x120 ☞ 2
 20x120 ☞ 2
 10x120 ☞ 2



30x120 ☞ 4
 INTERNO 9 MUD
19R57250 rett. F 68,90
19L57250 lapp. rett. F 81,90



60x60 ☞ 3
 INTERNO 9 MUD
19R01250 rett. F 53,90
19L01250 lapp. rett. F ????



30x60 ☞ 6
 INTERNO 9 MUD
19R03250 rett. F 49,90



30x60 ☞ 4
 MOS. LOSANGA MUD
19R03251 rett. F ????



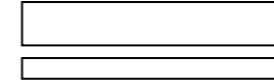
30x30 ☞ 6
 MOS. QUADRETTI MUD
19R09251 rett. F 101,90

INTERNO 9

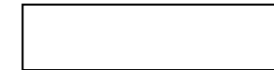
MUD



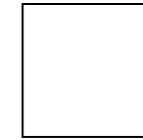
60x120 ☞ 2
 INTERNO 9 RUST
19R34300 rett. F 68,90
19L34300 lapp rett. F 81,90



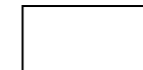
60x120 ☞ 2
 INTERNO 9 RUST
19R34310 mix sizes rett. F 88,90
 Pcs/box: 30x120 ☞ 2
 20x120 ☞ 2
 10x120 ☞ 2



30x120 ☞ 4
 INTERNO 9 RUST
19R57300 rett. F 68,90
19L57300 lapp. rett. F 81,90



60x60 ☞ 3
 INTERNO 9 RUST
19R01300 rett. F 53,90
19L01300 lapp. rett. F ????



30x60 ☞ 6
 INTERNO 9 RUST
19R03300 rett. F 49,90



30x60 ☞ 4
 MOS. LOSANGA RUST
19R03301 rett. F ????




30x30 ☞ 6
 MOS. QUADRETTI RUST
19R09301 rett. F 101,90


INTERNO 9

RUST



60x60  3
DUO INTERNO 9 COLD
I9R01160 rett. F ?????



60x60  3
DUO INTERNO 9 HOT
I9R01260 rett. F ?????




30x120  2
FASCIA RAKU DARK MIX 2
I9R57051 PZ ?????



30x120  2
FASCIA RAKU LIGHT MIX 2
I9R57052 PZ ?????




5x30  4
*FASCIA ESSENZE MIX
I9R03051 PZ ?????




19,5x8,5  4
LOSANGA RAKU MIX
I9R03052 PZ ?????





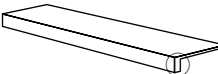

4x30  4
FASCIA ARDESIA GRIGIO
RER09204 rett. PZ 20,90
(Pietra naturale - Natural stone)

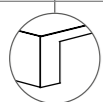


4x30  4
FASCIA ARDESIA BRONZO
RER09054 rett. PZ 20,90
(Pietra naturale - Natural stone)

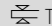






- * Decorazione realizzata in legno trattato e garantito per l'utilizzo nell'ambiente bagno. Il tipo di verniciatura fa in modo che non tema l'umidità, rendendo possibile la fugatura con normali stucchi ceramici epossidici. Dopo la posa in opera e la stuccatura, pulire il prima possibile con acqua avendo cura di asportare ogni residuo di stucco.
- * Decorative tile made in treated wood, guaranteed also for use in the bathroom. This kind of varnish protects from humidity, therefore it's possible filling with standard epossidic filler for ceramics. After placing and filling, please clean whitth water as soon as possible, carefully removing every mark left by the filler.

PEZZI SPECIALI / SPECIAL TRIMS

		PEARL	DUNE	SILVER	DARK	MUD	RUST
	BATTISCOPA rett. 6,5x60 PZ 7,90  10	I9R01051	I9R01101	I9R01151	I9R01201	I9R01251	I9R01301
	GRADONE TOP rett. 32x120x4,5x2 PZ 172,90  1	I9R34051	I9R34101	I9R34151	I9R34201	I9R34251	I9R34301



IMBALLI / PACKAGING





FORMATI SIZES	Formato Reale Real Size	 Thickness	 Pcs/Box	 Mq/Box	 Kg/Box	 Box/Pallet	 Mq/Pallet	 Kg/Pallet
60x120 / 24"x48" rett.	59,6x119,4	9	2	1,44	27,20	26	37,44	748
60x120 mix sizes	59,6x119,4	9	2	1,44	27,20	26	37,44	748
30x120 / 12"x48" rett.	29,7x119,4	9	4	1,44	27,20	36	51,84	1.020
60x60 / 24"x24" rett.	59,6x59,6	9	3	1,08	21,20	40	43,20	868
30x60 / 12"x24" rett.	29,7x59,6	9	6	1,08	21,20	40	43,20	868

L'unità minima di vendita per tutti gli articoli (fondi, decori e pezzi speciali) è la scatola completa. / The minimum sales quantity for all items (plain tiles, decorations and special trims) is one full box.
Pezzi speciali e decori per effetto delle lavorazioni, possono presentare variazioni di tonalità. / Due to working process special trims and decors, may show variation in tonality.

CARATTERISTICHE TECNICHE / TECHNICAL FEATURES

CLASSIFICAZIONE SECONDO NORME UNI EN 14411 (ISO 13006) ALLEGATO G-Gruppo B1a
CLASSIFICATION IN ACCORDANCE WITH UNI EN 14411 (ISO 13006) ANNEX G-Group B1a

GRES PORCELLANATO A MASSA COLORATA FULL BODY COLORED PORCELAIN STONEWARE	NORMA NORM	VALORE PRESCRITTO DALLE NORME VALUE PRESCRIBED FROM THE NORMS	VALORE ABK ABK VALUE Interno 9 naturale	VALORE ABK ABK VALUE Interno 9 lappato
RESISTENZA AL GELO FROST RESISTANCE	UNI EN ISO 10545/12	RICHIESTA REQUIRED	INGELIVO FROST PROOF	INGELIVO FROST PROOF
COEFFICIENTE D'ATTRITO DINAMICO DYNAMIC FRICTION COEFFICIENT	B.C.R.A. C.A.	$\mu < 0,19$ SCIVOLOSITÀ PERICOLOSA - DANGEROUSLY SLIPPERY $0,20 < \mu < 0,39$ SCIVOLOSITÀ ECCESSIVA - EXCESSIVELY SLIPPERY $0,40 < \mu < 0,74$ ATTRITO SODDISFACENTE - SATISFACTORY GRIP $\mu > 0,75$ ATTRITO ECCELLENTE - EXCELLENT GRIP	> 0,40	-
	B.C.R.A. G.B.		> 0,40	-
COEFFICIENTE D'ATTRITO STATICO COEFFICIENT OF STATIC FRICTION	ASTM C 1028 (S.C.O.F.)	SLIP RESISTANT (> 0,60)	> 0,60 DRY	-
			> 0,60 WET	-
CLASSIFICAZIONE ANTISDRUCCIOLO NON-SLIP CLASSIFICATION	DIN 51130	IN FUNZIONE DELL'AMBIENTE O DELLA ZONA DI LAVORO BASING ON THE ENVIRONMENT OR THE WORKING AREA	R10	-
RESISTENZA ALLO SCIVOLAMENTO SLIP RESISTANCE	DIN 51097	-	A	-

VARIAZIONE CROMATICA SHADE VARIATION	V3	 aspetto uniforme uniform appearance V1	 lieve variazione slight variation V2	 moderata variazione moderate variation V3	 forte variazione substantial variation V4
---	----	--	--	---	---



LA GARANZIA DI UN FUTURO GREEN BUILDING PASSA ATTRAVERSO LA QUALITÀ ECO-SOSTENIBILE.

Da azienda sensibile alle tematiche ambientali, ABK si è sempre preoccupata di mantenere i parametri che regolano i processi industriali al di sotto delle normative, composto al 40% minimo da materiale riciclato recuperato da altre lavorazioni industriali. ECO-BODY è ufficialmente certificato per recepire gli standard LEED (Leadership in Energy and Environmental Design) il sistema di rating internazionale delle performance ambientali che in edilizia promuove la progettazione sostenibile riguardante l'intero edificio per ridurre l'impatto ambientale per tutto il suo ciclo di vita. Tutte le collezioni ABK che utilizzano questo speciale impasto certificato, riportano nella pagina riepilogativa l'esclusivo logo ECO-BODY, che oltre ad indicare il 40% minimo di materiale riciclato, ne evidenziano la compatibilità col sistema di crediti LEED.

ABK è membro di GREEN BUILDING COUNCIL ITALIA, l'associazione italiana dei leader che operano per trasformare il mercato dell'edilizia verso la sostenibilità ambientale e per costruire comunità vivibili. I soci GBC Italia promuovono la responsabilità ambientale, economica e sociale innovando il modo in cui gli edifici sono progettati, realizzati e utilizzati.

THE FUTURE OF GREEN BUILDING IS GUARANTEED BY ECO-SUSTAINABLE QUALITY.

As a company that cares deeply about environmental issues, ABK has always endeavoured to keep its parameters below the legal limits for manufacturing processes, utilising a minimum of 40% recycled material recovered from other industrial processes. ECO-BODY is officially certified for access to LEED (Leadership in Energy and Environmental Design) credits, the international rating system for environmental performance which promotes sustainable design in the construction industry with a view to reducing the overall environmental impact of buildings over their entire life cycle.

All ABK collections made with this special certified mix are identified in the contents page with the exclusive ECO-BODY logo, which in addition to indicating a minimum of 40% recycled material, underlines the product's compatibility with the LEED credits system. ABK is a member of Italian GREEN BUILDING COUNCIL, the association of top players working to transform the building market towards sustainability and to build liveable communities. GBC Italian members promote environmental, economic and social responsibility, innovating buildings in terms of engineering, design, manufacturing and use.

The system is based on credits awarded for each of the sustainability requirements met by the building. The sum of the credits determines the level of certification obtained. Although LEED certification is awarded to buildings and not single products, ceramic tile products contribute to the achievement of LEED credits.

La riproduzione dei colori è approssimativa.
Colour reproduction approximate.

ABK Group Industrie Ceramiche s.p.a.
via S.Lorenzo N.24/a - 41034 Finale Emilia - Modena Italy
tel. 0535 761311 - fax 0535 761320/92800/761351

INTERNO 9



www.abk.it

